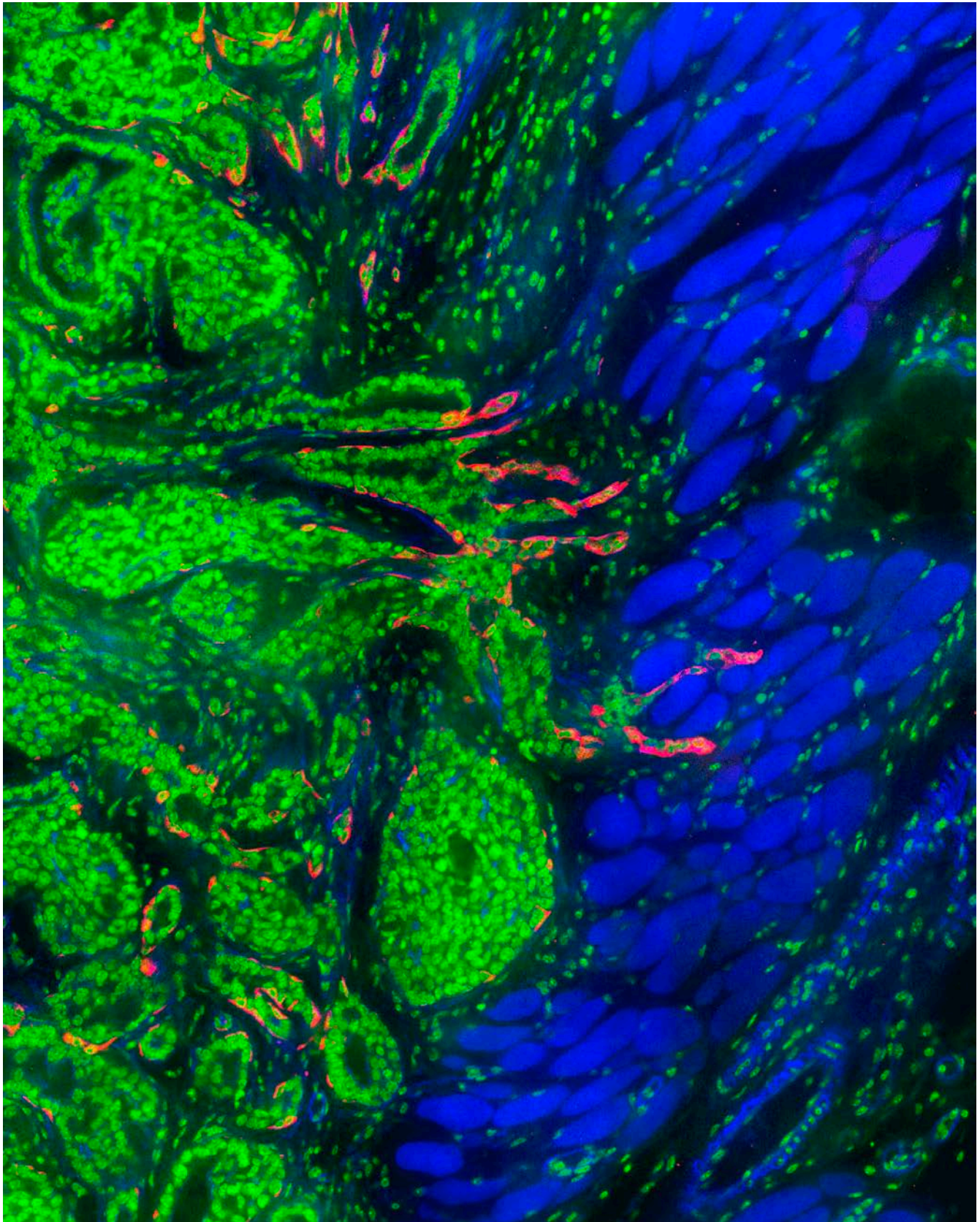




Cancer Cell Invasion

CANCER CELL INVASION



BACKGROUND INFORMATION

Follow the leader? This image shows cells in a primary breast cancer tumor invading the surrounding muscle tissue (blue). Both the green- and pink-stained cells are tumor cells, but the pink cells represent “leader” cells: cells that break off from the main body of the green tumor and begin to metastasize, a process by which cancers from a primary tumor invade and colonize other tissues. These leader cells are both genetically and behaviorally different from the main body of the tumor. Researchers hope to identify the genetic mutations that cause cells to become leaders to give them new opportunities for treating breast cancers and preventing metastasis.